



Welcome to Earthcomber!

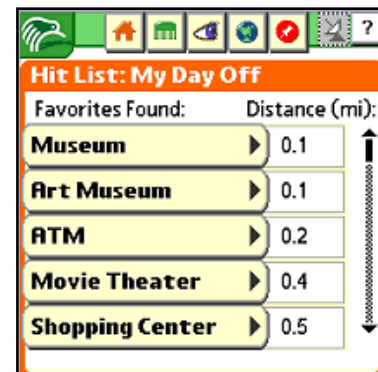
Comb

A verb meaning “To search thoroughly”

Earthcomber is a personal navigator and “favorite things finder,” a mobile lifestyle tool that helps you find exactly what you want, wherever you are. At the same time, Earthcomber allows you to record your experience as you go.

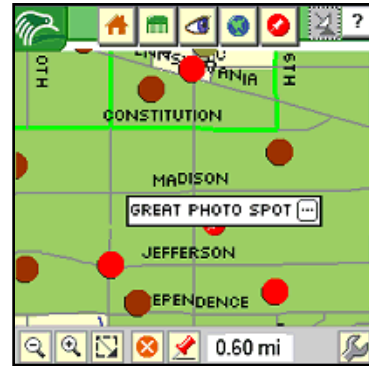
As you travel across town or across the country, Earthcomber constantly sweeps the landscape for your favorite things and notifies you when a favorite is in range. Earthcomber can point you to favorite stores, services, attractions, historical sites, hobbies, and more. Earthcomber can notify you when favorite artists are playing nearby. Earthcomber can point you to nearby facilities such as the closest library, post office, shopping mall, hospital, or police station. And if you like nature, Earthcomber can point you to the nearest park, mountain summit, hiking trail, lava flow, glacier, waterfall, lake, and many more natural features.

Earthcomber contains information about nearly 1.5 million locations, landmarks, and businesses across the United States. And more content is being added every day – by our publishing team, by other content publishers, and by businesses who list their products and services on Earthcomber.





In addition, Earthcomber lets you mark the map with spots that are significant to you. You can keep these spots private, or you can share them with other people who have similar interests. For example, you might use Earthcomber to mark all the great places you visited on your last vacation. Earthcomber will save the exact latitude/longitude of each spot, and allow you to record notes and descriptions. You can then copy these spots to your account on the Earthcomber web site, where you can keep it in a private area for yourself or share it with other groups of Earthcombers. Any spots contributed to a public group become part of Earthcomber, and will show up on the maps of all members of that group.

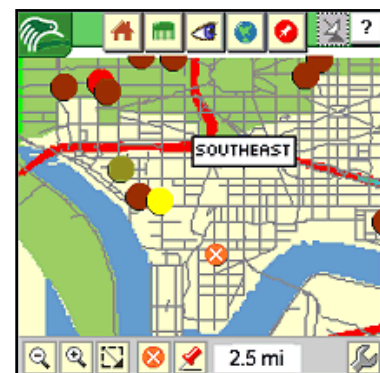


Earthcomber allows you to create:

- Personal applications – You can create "map logs" that show memorable spots – where you grew up, where you scored that winning goal, where you got married.
- Family applications – You can mark places of significance to your family -- homes, ancestor gravesites, family reunion sites, and points of genealogical interest.
- Community applications – You can mark favorite spots for hiking, running, climbing, eating, golfing, traveling, etc., and then share those spots with other people who have the same interests. Your spots show up on their maps, and their spots show up on yours.
- Work applications – If you have a service business, you can mark the locations of customers so that your employees can find those customers easily. Employees can even use Earthcomber to keep notes about the work done at each customer location.



Earthcomber is free for users. You get free maps for every county in every state. You can browse these maps by zooming in and out, searching out addresses, and displaying street names. If you have GPS (global positioning system), Earthcomber can read the GPS signal and show you exactly where you are on the map.





Earthcomber is devoted to helping you get more out of life, by bringing you user-generated content. Accurate information, all the time. The most relevant data. Agent technology tied to geo-coordinates, matching up mutual interests even when nobody's looking. Ultimately, technology that works for you and communicates only when it has results.

We hope you enjoy Earthcomber!

Jim Brady

Founder, Earthcomber LLC

jbrady@earthcomber.com



The Big Picture

Earthcomber provides a real-time match between your favorite things and the points of interest in your world. Below are some of the key terms you should understand.

Favorites

Earthcomber needs to know what favorites you want to comb (search) for as you move about your world. Favorites can be anything of interest ... from *ATM* to *Pakistani Restaurant* to *Classic Mercedes Car*, and tens of thousands of things in between! You select your favorites on the Earthcomber website and then download them to your Palm device.

Earthcomber also needs to know how far it should look for your favorites. For example, you might want Earthcomber to notify you when *ATMs* or *Coffee* are within two-tenths of a mile (about 4 blocks) from your current location. For *Pakistani Restaurant*, you might extend the range to two miles. For *Classic Mercedes Car*, you might want Earthcomber to tell you when you are within 25 miles. Earthcomber can search up to 100 miles from your location.



Earthcomber searches only for what you are interested in, and at the ranges you specify.



Look Lists

Look Lists are collections of favorites. You can create multiple Look Lists to fit different needs – business travel, touring, bopping around town, whatever! When you use Earthcomber on your Palm, you can quickly switch from one list to another to give you a different “view” of your surroundings.

For example, your *BizTravel* Look List might contain the favorites *Coffee, Airport, Business Printing,* and similar types of places. With a tap on your Palm, you might switch to your *Tourist* Look List that contains favorites such as *Museum, Aquarium, Monuments,* and more. Again, these are just examples. Your favorites and your Look Lists are completely personal to you.



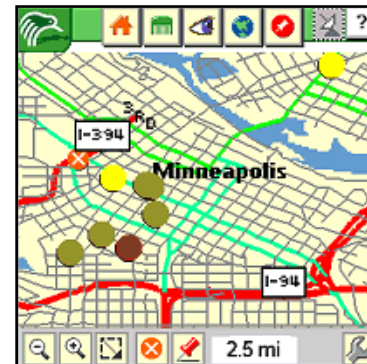
A sample Look List after being loaded on the Palm

You create Look Lists on the Earthcomber website. You can also select from a number of pre-built Look Lists. You then download the Look Lists to your Palm so that Earthcomber knows what to search for. You can go back to the website at any time to modify Look Lists or create new ones.

Maps

Earthcomber provides thousands of maps, free of charge, covering every county of the United States. You select the maps on the Earthcomber website. You can go back to the website at any time to select different maps.

After you download the maps to your Palm, you can use the maps to navigate your world. You also use the maps to tell Earthcomber where you are, so that it knows where to search for your favorites.



If you have a Global Positioning System (GPS) signal on your device, Earthcomber can use it to determine where you are automatically.



Your Spots

In addition to finding places that Earthcomber already knows about, you can use Earthcomber to mark your own spots on the map. Anytime you are looking at an Earthcomber map, you can mark a spot that is of interest to you. After you mark a spot, you can supply more information about it and choose to copy it to your account on the Earthcomber web site.

You can also mark spots directly on the Earthcomber website, using maps and forms provided there.

After you create a spot, you can share it with other groups on the Earthcomber website. Spots contributed to each group become part of the group's Earthcomber data and can be combed and displayed on maps just like any other Earthcomber data. Each member of a group benefits from spots marked by *every* member of the group.

The Role of Your PC

After creating your Look Lists and selecting your maps on the Earthcomber website, you will need to download a Windows application to your PC that will help you synchronize your Palm device. You need to do this only one time. The Windows application checks the Earthcomber website once each week to ensure that your Palm is up to date. You can also force the application to check more frequently.

If an update is available, Earthcomber downloads any updated Look Lists, maps, and necessary location data to your PC and informs your Palm HotSync software that the data should be moved to your Palm during the next sync process. During the next sync process, your Earthcomber application is updated.

In addition to making sure that your Palm is updated, the Windows application copies to the website any spots that you have marked to be copied.

Linux or Mac User: You do not need to install any software on your PC. Instead, use the **Download** page of the Earthcomber website to access your Earthcomber files for downloading. After downloading the files, move them to your Palm as you normally do. Unfortunately, there is no way currently for you to copy spots from your Palm to the website. You will have to enter your spots directly on the website. See the **Setup** chapter for more information about downloading files to your Mac. See the **Community** chapter for more information about creating spots directly on the website.

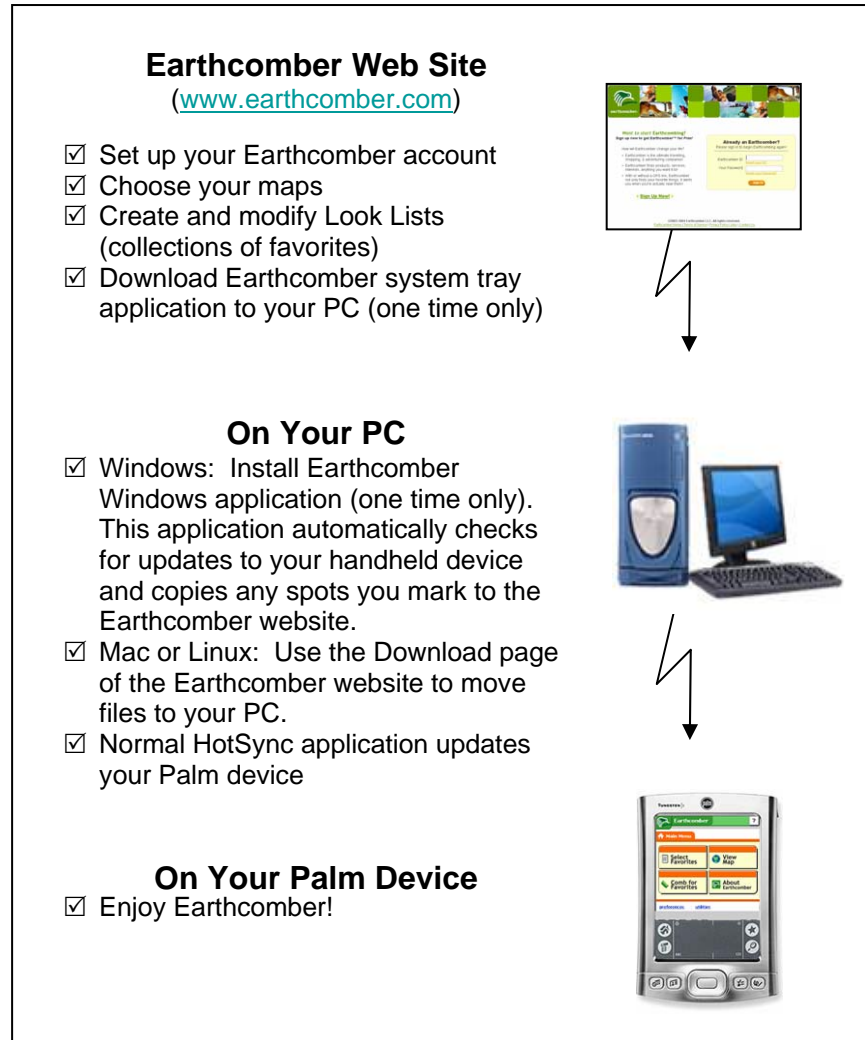


Summary of Key Points

- **Favorites** – interests that you want Earthcomber to comb for. For each favorite, you identify the range you want Earthcomber to comb.
- **Look Lists** – collections of favorites. You create Look Lists on the Earthcomber website and download them to your Palm. On the Palm, you can quickly switch from one Look List to another to search for different groups of favorites in your surroundings.
- **Maps** – the way you navigate your world and tell Earthcomber where you are.
- **Spots** – places you mark on the map, using either Earthcomber on your Palm or the Earthcomber website.
- **Earthcomber Website** – the place you go to select your favorites, create/modify Look Lists, and select maps.
- **Earthcomber Windows Application** – software you download from the Earthcomber website to your PC. Once on your PC, this application periodically checks your account on the Earthcomber website to see if any updates need to be downloaded to your Palm. This application also copies spots from your Palm to the Earthcomber website. If you use Linux or a Mac PC, you use a special Download page on the Earthcomber website to get files to your PC.
- **Palm HotSync** – software that came with your Palm that actually moves Earthcomber updates to your Palm.
- **Earthcomber** – a fun, free finder of your favorite things!



How It All Connects Together





Supported Palm Devices

Required Characteristics

- **Operating System** - Palm Operating System version 3.5 or higher.
- **Display** - 160x160 resolution or higher, color or 4-bit grayscale. Earthcomber can work on 2-bit grayscale and even black-white displays, but important elements will not be visible and you will probably not enjoy the experience.
- **RAM** - Minimum 8 MB. Earthcomber maps are especially dense due to a rich information layer. While many maps require less than 1 megabyte, some maps require up to 6 megabytes. We recommend that if your device has limited memory, carry an SD card with you to hold additional maps you need.

Palm Units Tested

Garmin iQue 3600
 Handspring Visor
 Palm m515
 Palm Tungsten C
 Palm Tungsten T
 Palm Zire 31
 Palm Zire 72
 Sony Clie PEG-TJ37
 Sony Clie TG 50 Series D

Handspring Treo
 Palm m130
 Palm Treo 600 and 650
 Palm Tungsten E
 Palm Tungsten W
 Palm Zire 71
 Sony Clie NX 70 Series
 Sony Clie PEG-SJ22

GPS Units

The following Global Positioning System (GPS) units are compatible with Earthcomber. GPS is not required but it greatly improves the Earthcomber experience. If you do not have GPS, you can use the Earthcomber maps to identify your current location, simply by tapping on the map.

EMTAC Wireless GPS Bundle for Palm OS
 HandyGPS and HandyGPS Pro for the Handspring Visor
 Magellan GPS Companion for Palm m500 series
 Magellan GPS Companion for Visor
 Navman GPS M-Series for Palm
 Pharos iGPS Receiver PocketPaks for Palm and Sony Clie



Support Planned for Other Handhelds

Earthcomber will add support for Windows Mobile handhelds in the near future. Additional platforms are under consideration.

Ready to Start Earthcombing?

Follow these steps to begin Earthcombing.

1. Create an Earthcomber account on our website (www.earthcomber.com). Then create your Look Lists and select the maps you need. See the instructions in the **Setup** chapter.
2. Download the Earthcomber Windows application to your PC. You need to do this one time only. See the instructions in the **Setup** chapter.
3. Use the Windows application to move updates from the Earthcomber website to your PC, then use the normal synchronization process to move these updates to your Palm. See the instructions in the **Setup** chapter.

Linux or Macintosh Note: You do not need to install any software on your PC. Instead, use the **Download** page of the Earthcomber website to access your Earthcomber files for downloading. After downloading the files, move them to your Palm as you normally do. See the **Setup** chapter for more information about Linux/Mac.

4. Use your Palm to start Earthcombing! See the instructions in the **Palm** chapter.