



Earthcomber Community: Marking and Sharing Spots on the Map

You can use Earthcomber to mark places of interest on the map, and then share those places – if desired – with other people. You can use these features for a variety of applications:

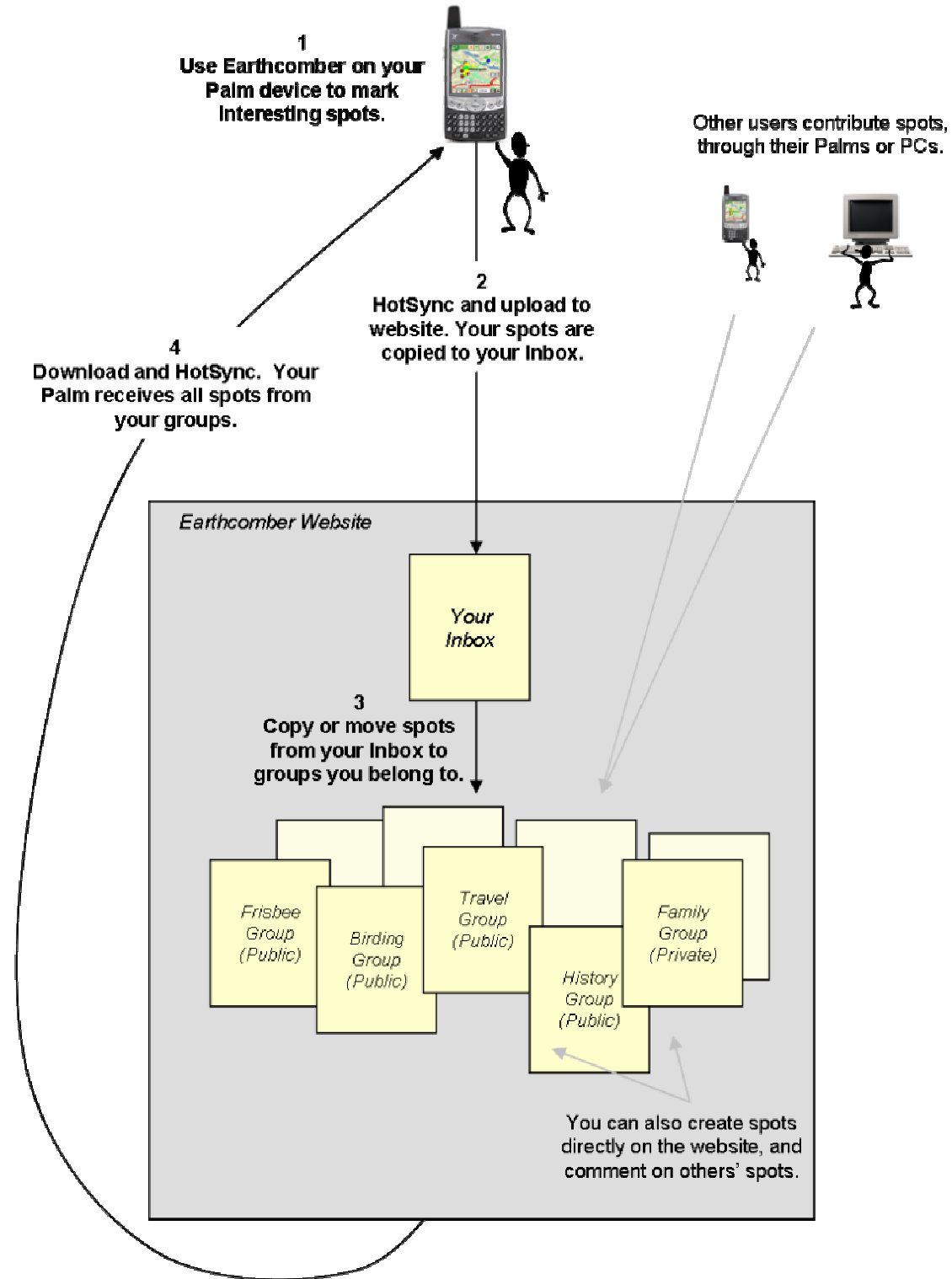
- Personal travel & adventure – create map logs ("plogs") by marking memorable spots such as vacation highlights or discoveries.
- Family connections – mark family homes, ancestor gravesites, family reunion sites, and points of genealogical interest.
- Interest-group applications – mark favorite spots for hiking, running, climbing, eating, golfing, traveling, etc.
- For work – mark the locations of customers, job sites, suppliers, and other spots of interest to co-workers.
- For events – in fairs, festivals, outdoor shows and political gatherings, help participants and visitors find key spots.

Spots that you mark can be shared with public or private groups. Members of each group can then load the spots onto their own Palm devices. For example, if a member of a bird-watching group marks 20 new spots for viewing birds, other members of that group will see those 20 spots on their own Earthcomber maps.

You do not even need a Palm to participate in the Earthcomber community. Directly on the Earthcomber website, you can mark new spots to share with your groups, and also view the spots that have been marked by other group members.



Overview of Earthcomber Community Features





Earthcomber's community groups give you a way to communicate with other group members about places of common interest ... much like a web community group. With Earthcomber, however, you can load all of the places onto your Palm and carry them with you.

You do not have to share your spots with public groups. You can also create private groups that are open to others only through invitation. You might use this approach for personal and family **plogs** (map logs).

New Earthcomber User?

If you are new to Earthcomber, we suggest that you get comfortable with Earthcomber first before you begin using the Community features. Here's the short list to a good start:

1. Create your free Earthcomber account at www.earthcomber.com.
2. Follow the instructions on the website to:
 - Pick the things you want to find (favorites)
 - Assign your favorites to "Look Lists"
 - Select maps you need
 - Download the Earthcomber Windows software and install it on your PC. This is a 1-time download. This software sets up a communications link that sends your favorites, maps, and Look Lists from the web site to your Palm, and uploads any spots you want to copy into your Earthcomber Inbox.

Note: If you have a Mac or Linux PC, see the Earthcomber user's guide for more information.

3. Sync up your Palm device and start combing!



Earthcomber Community on the Website

To begin using Earthcomber community features on the website, select **Earthcomber Community**.

Click here to get to Earthcomber Community



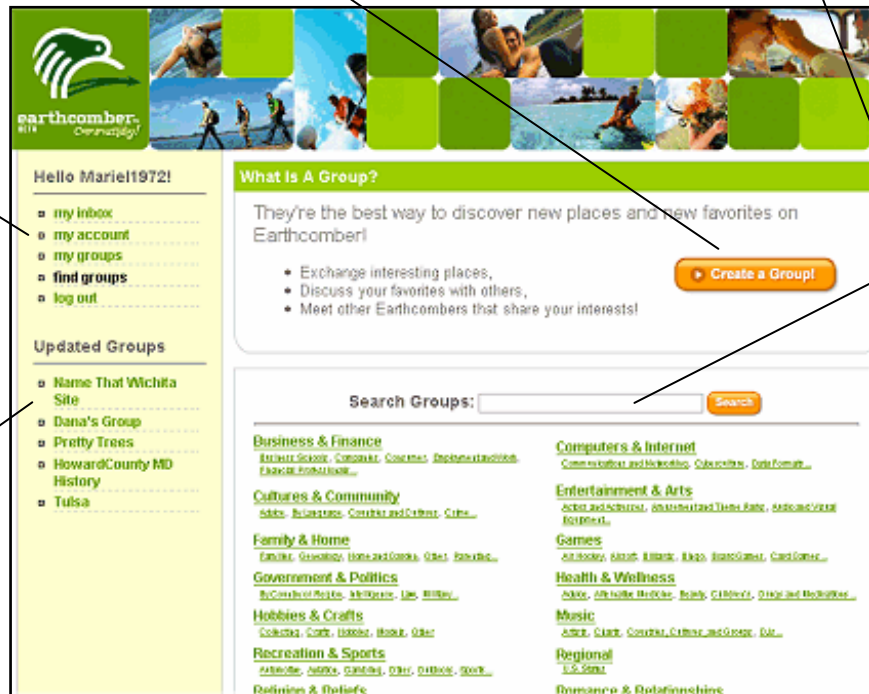
The next screen gives you access to the major Community features.

Click here to create a group. You will have to browse the categories and tell Earthcomber where to place the group.

Or search for an existing group to join.

Use these links to navigate your Inbox and

Lists the groups you are subscribed to that have recently changed





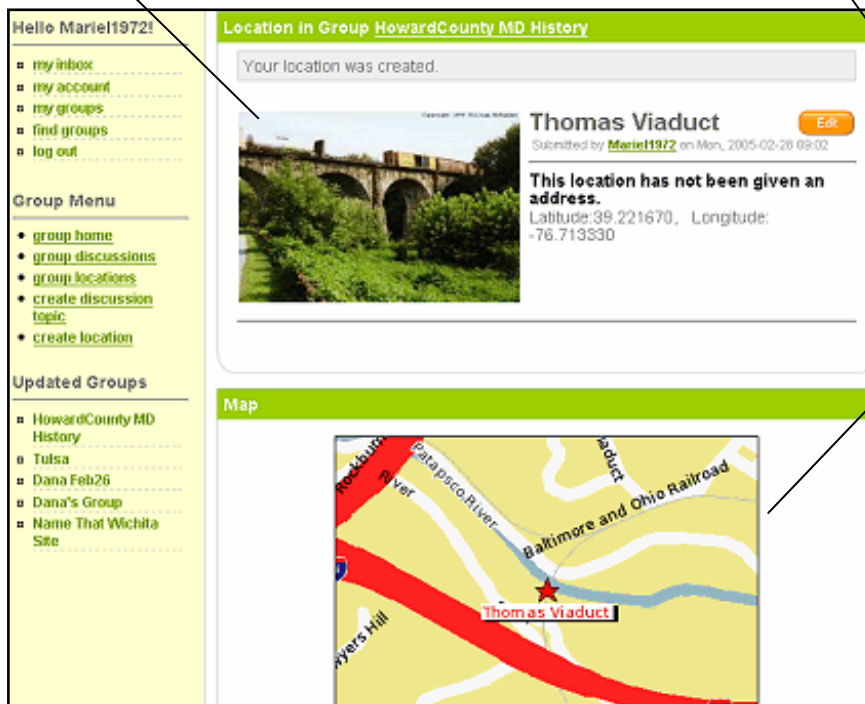
The Earthcomber Community screens are self-explanatory. They allow you to:

- Create groups that are private or public. Users who try to join a private group will be notified that they require permission from you.
- Join an existing group by browsing or searching for it.
- Contribute comments or discussion topics to groups.
- Create locations.
- Contribute locations to groups.

The following illustration shows a sample location after it was created on the website.


You can include an image and additional description about the location.

Earthcomber maps the location for you, using the address or latitude/longitude you provide.





Marking Spots on the Palm

1. On the **map** screen, tap 
2. Tap the map where you want to mark a spot. A small red icon appears.


Tap the spot-marker button ...

... and then tap the spot
you want to mark



3. To name and describe the spot, tap it to display its label. Then tap 

Tap the spot you marked ...

... and then tap 





4. Use the next screen to enter more information about the spot. You can also use the **Desc** tab to enter additional notes.

You can provide a name, address and phone number for the spot.

Tap here if you want to enter more information about the spot.

A screenshot of the Earthcomber application's 'Desc' (Description) screen. The screen has a yellow background and a white text area. At the top, there is a navigation bar with icons for home, back, forward, and search. Below the navigation bar, there are two tabs: 'Desc' (selected) and 'Map'. The main content area contains the following text: 'Name: Picnic Spot', 'Address: Ohio Drive, Washington DC', 'Phone: [empty field]', 'Geocode: 38.8639, -77.0241', and 'Time: 2/23/05 9:48'. At the bottom, there are three buttons: 'Save', 'Cancel', and 'Copy to Web' (with a checked checkbox).

Be sure to click the Save button to save any changes.

Check this box if you want to copy this spot to your Inbox on the Earthcomber website. The spot will be copied when you synchronize and use the Earthcomber Windows application.



Managing Your Marked Spots on the Palm

At any time, you can see a list of the spots you have marked on the Palm. From this list, you can edit the spots, delete them, or display them on the map.

1. Choose **View My Spots** from the Earthcomber home screen.
2. On the **Spot Manager** screen:

Tap a spot to see details for it.



Tap the globe to display the spot on the map.

Tap here to delete a spot.

Getting Spots to and From the Web Site

Copying Spots: Palm to Web Inbox

1. Use the Palm HotSync application to synchronize your Palm. During this process, any spots that you have marked and set for "Copy to Web" will be copied to your PC.
2. Open the Earthcomber Windows application and press **Check for Update**.
3. Press **Download Update**. Earthcomber checks the website for any updates to the maps and location data on your Palm. It also copies your spots to your Inbox.
4. Go to the Earthcomber Community web page and open your Inbox. You can copy or move any of these spots to other groups that you belong to.



Copying Spots: Website to Palm

At any time, you can copy spots from the Community website to your Palm. Earthcomber will copy the spots from your groups to your Palm.

Note: You will receive only the spots that are located on the maps you already have on the Palm. For example, if you belong to a bird-watching group that has marked 500 locations in your state, but your Palm contains only 1 county map, you will get only the spots located in that county. You can add other Earthcomber maps at any time if you want to see the other bird-watching spots on your Palm.

Follow these steps to copy spots from your Community groups to your Palm:

1. Open the Earthcomber Windows application and press **Check for Update**.

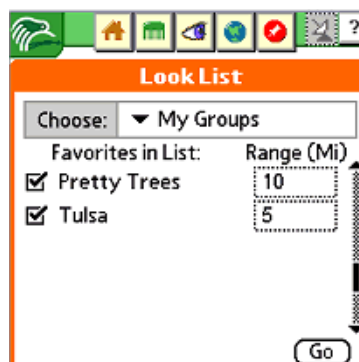
If your groups have any new spots since the last time you downloaded them, you should see a message that an update is available.

2. Press **Download Update**. Earthcomber downloads any new spots.
3. Use the Palm HotSync application to synchronize your Palm. The spots from the website are moved to your Palm.

Searching for a Group's Spots on the Palm

When you copy spots from the website to your Palm, Earthcomber creates a Look List called **My Groups** that contains a favorite for each group to which you belong. You can comb for these favorites just as you do any other favorite.

In the following example, the user belongs to two groups: *Pretty Trees* and *Tulsa*.





Getting Spots to and From the Web Site: Mac/Linux

If you have a Mac or Linux PC:

- You cannot copy spots from your Palm to the website. You will have to create spots manually on the website.
- To copy spots from the website to your Palm, use the Download page of the Earthcomber website to copy spots (plus other favorites and maps) to your PC. This data arrives on your PC in a zip file. Unzip the file and move the contents to your Palm as you normally would. For more information, see the full Earthcomber user's guide.