

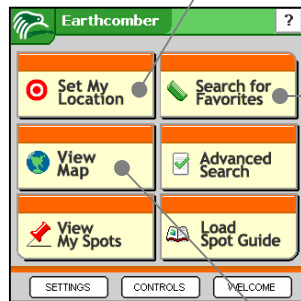
Set My Location

Pick a method for setting your location.
If you need a map, use **City or Landmark** to select the map you need.

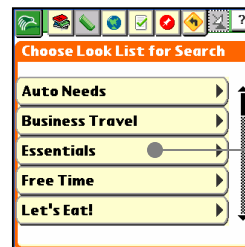


Now select
Search for Favorites or View Map

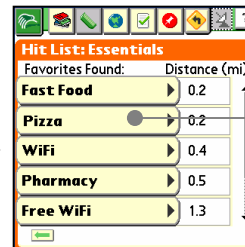
Search for Favorites



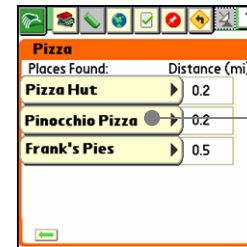
Pick the **Look List** you want to search.



Now pick a favorite ...



... to see places nearby with that favorite. Now pick a place ...



... and use the tabs at the top to see more info for that place.



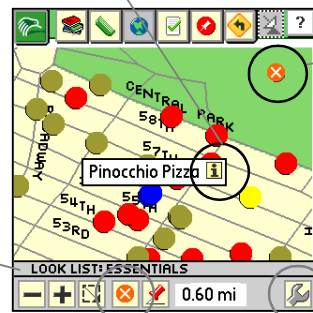
View Map

Tap a place to display its label ... and press **i** to get more info about the place.

The map shows search results for the current Look List. Places are shown with colored icons.

Tap here to select a different Look List.

Zooming controls



The **X** marks your location. You can drag it to a new spot and Earthcomber will search from there.

Tap here to search for addresses and to get directions.

Tap the zoom level indicator to go directly to a zoom level.

You can tap the **X** and then tap the map to reset your location.

Shortcuts & Help

Inside Earthcomber, the top toolbar provides shortcuts to all major features.



Spot Guides

Returns you to main screen

Tap here to get help anywhere for Earthcomber.

Quick Start Guide – Advanced Features

Advanced Search

Pick a Look List to change

Uncheck a favorite, or change the search range

You can turn all favorites on/off, or set search range for all

Press Go when done

Spot Guides

After loading a guide, use the guide links to browse.

Browse

Distance from your current location to this place. (Not available in all guides.)

Explore

Use these links for more info, or to see the place on the map.

Search

Spot Guides come with their own Look Lists, for searching the guide content.

Map

You can also map the places in a Spot Guide. Just select a Look List that came with the Spot Guide, and go to the map.

Your Own Spots on the Map

View

Tap any spot you have created to change its name or description.

Mark - Save - Share

1 Tap this button

2 Tap the map to mark a spot, and then tap the icon you just created.

3 Tap the *i* to enter more info

4 Enter more info about the spot and tap **Save**.

Leave checked to copy the spot to your Earthcomber Inbox when you next sync.

GPS

If you have GPS on your device, tap here to turn it on or off

Indicators:

- (Green) Good to go!
- (Yellow) Earthcomber is reading the GPS signal but the latitude/longitude signal isn't valid. Wait for a valid signal or move your GPS device.
- (Red) Earthcomber can't read the GPS signal. You may need to turn on the GPS device, reset it, or tap Earthcomber's GPS button again.